

CSST Straight Coupler

CSS 01



This Brymec product is not manufactured by and has no connection with GFS Flex



KM 714530
BS EN 15266: 2007



Technical Data

- Manufactured to BS EN 15266 CSST Gas installation in buildings
- Max Operating Pressure 0.5 Bar
- Removable yellow clip for simple installation
- 1st, 2nd & 3rd Family gases to EN 437
- Fire classification: B-s1-d0

Tightening Torque

TUBE DIAMETER DN	Min (Nm)	Max (Nm)
DN15	65	95
DN20	90	130
DN25	105	150
DN32	125	170

Remove yellow ring between nut and fitting, tighten nut by hand firstly, then to correct tightening torque as indicated above.

Perfect seal and full corrosion resistance integrity between pipe and fitting without any wrapping required.

Features and Benefits

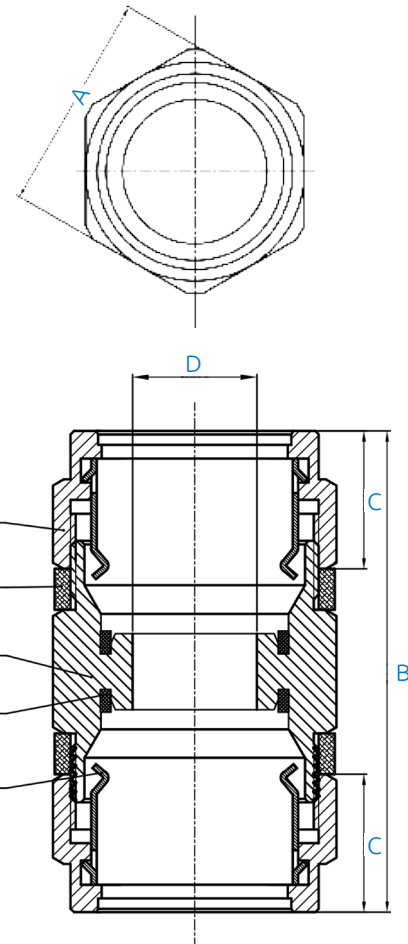
- Easy installation
- No welding, no painting, no overwrapping required
- Chemical Resistant
- Push fit and tighten fittings provide a fast connection and perfectly even flare
- Compression fittings provide dual metal/metal and silicone rubber seal
- Time and Labour saving
- 10 year warranty on CSST and fittings

Materials Specifications

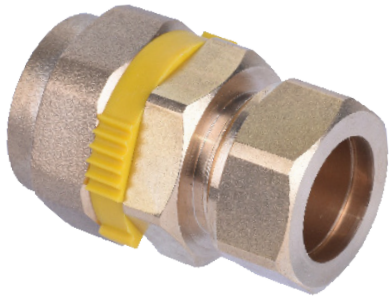
NO.	COMPONENT	MATERIAL	REF
1	Nut	CW 614 N	EN 12165
2	Retainer	Cw458K	EN 12164
3	Flat Gasket	NBR	EN 549/A2/H3
4	Coupling Body	CW 614 N	EN 12164
5	Clip Ring	Plastic	-

Product Codes & Dimensions

STOCK NO.	SIZE	A (mm)	B (mm)	C (mm)	D (mm)
29058	DN15	32	77.0	20	13
29059	DN20	35	77.5	20	17
29060	DN25	45	83.0	25	22
29061	DN32	55	77.5	19	30



CSST Copper Compression Adaptor CSS 04



This Brymec product is not manufactured by and has no connection with GFS Flex



KM 714530
BS EN 15266: 2007



Features and Benefits

- Easy installation
- No welding, no painting, no overwrapping required
- Chemical resistant
- Push fit and tighten fittings provide a fast connection and perfectly even flare
- Compression fittings provide dual metal/metal and silicone rubber seal
- Time and labour saving
- 10 year warranty on CSST and fittings

Materials Specifications

NO.	COMPONENT	MATERIAL	REF
1	Nut	CW 614 N	EN 12165
2	Retainer	Cw458K	EN 12164
3	Flat Gasket	NBR	EN 549/A2/H3
4	Nipple Body	CW 614 N	EN 12164
5	Clip Ring	Plastic	-
6	Compression Olive	CW 614 N	EN 12164
7	Compression Nut	CW 614 N	EN 12164
8	Copper Tube (supplied by others)	Copper	EN 1057

Product Codes & Dimensions

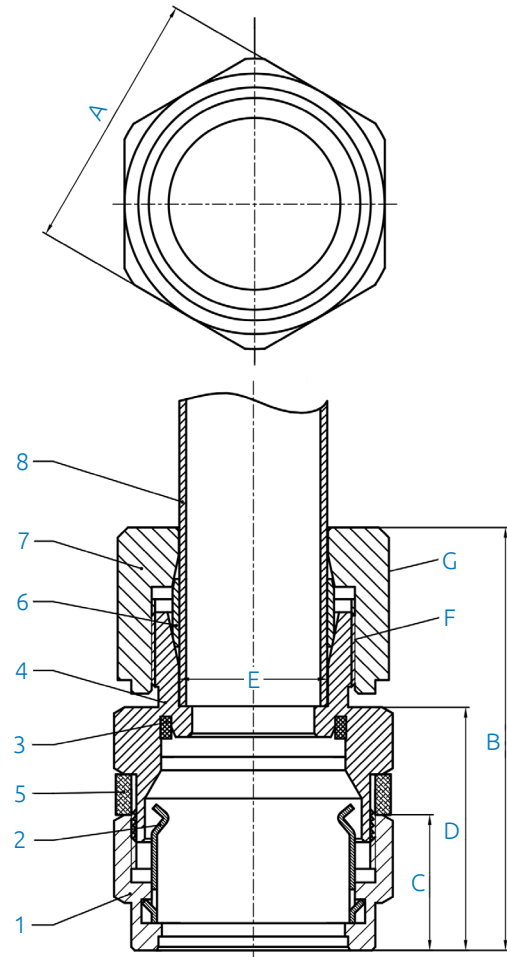
STOCK NO.	SIZE	A (mm)	B (mm)	C (mm)	D (mm)	E (mm)	F (mm)	G (mm)
29071	DN15 x 15mm	32	59.5	23.0	39.5	15	M22 x 1.5	27
29072	DN20 x 15mm	35	59.5	22.5	39.5	15	M22 x 1.5	27
29073	DN20 x 22mm	35	59.5	22.5	39.5	22	M28 x 2	32
29074	DN25 x 22mm	45	62.0	25.5	43.5	22	M28 x 2	32
29075	DN25 x 28mm	45	62.0	25.5	43.5	28	M36 x 2	41
29076	DN32 X 22mm	55	59.0	19.0	37.0	22	m28 X 2	32
29078	DN32 x 28mm	55	59.0	19.0	37.0	28	M36 x 2	41
29077	DN32 x 35mm	55	59.5	19.0	37.0	35	M45 x 2	50

Technical Data

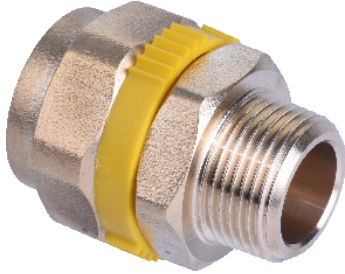
- Manufactured to BS EN 15266 CSST Gas installation in buildings
- Max operating pressure 0.5 Bar
- Removable yellow clip for simple installation
- 1st, 2nd & 3rd family gases to EN 437
- Fire classification: B-s1-d0

Tightening Torque

TUBE DIAMETER DN	Min (Nm)	Max (Nm)
DN15	65	95
DN20	90	130
DN25	105	150
DN32	125	170



CSST Male BSPT Adaptor CSS 45



This Brymec product is not manufactured by and has no connection with GFS Flex



KM 714530
BS EN 15266: 2007



Features and Benefits

- Easy installation
- No welding, no painting, no overwrapping required
- Chemical resistant
- Push fit and tighten fittings provide a fast connection and perfectly even flare
- Compression fittings provide dual metal/metal and silicone rubber seal
- Time and labour saving
- 10 year warranty on CSST and fittings

Materials Specifications

NO.	COMPONENT	MATERIAL	REF
1	Nut	CW 614 N	EN 12165
2	Retainer	Cw458K	EN 12164
3	Flat Gasket	NBR	EN 549/A2/H3
4	Nipple Body	CW 614 N	EN 12164
5	Clip Ring	Plastic	-

Product Codes & Dimensions

STOCK NO.	SIZE	A (mm)	B (mm)	C (mm)	D (mm)	E (mm)	F (BSPT)
29037	DN15 x 1/2"	32	53.5	23.0	38.5	13	R1/2
29038	DN20 x 3/4"	35	53.5	22.5	39.0	17	R1/4
29039	DN25 x 1"	45	58.5	25.5	42.5	22	R1
29040	DN32 x 1 1/4"	55	60.0	19.0	39.5	32	R1 1/4

Technical Data

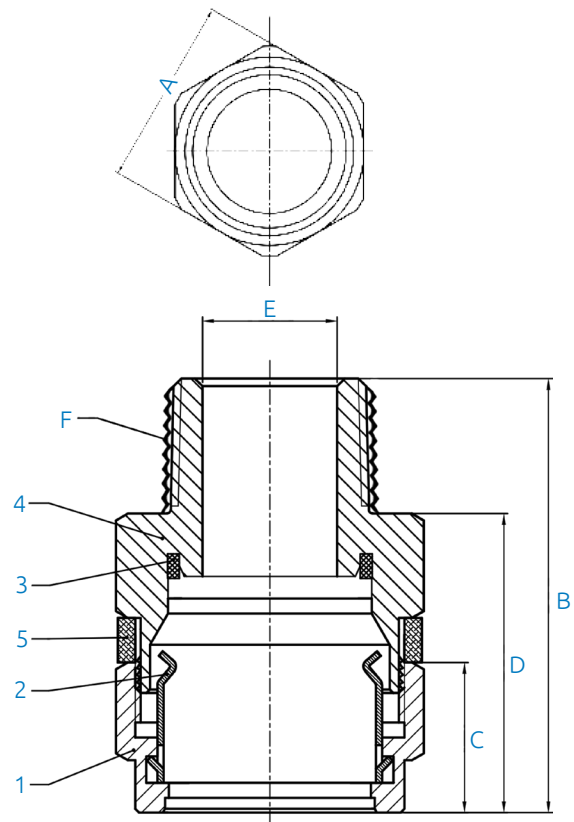
- Thread BSP taper
- Manufactured to BS EN 15266 CSST Gas installation in buildings
- Max operating pressure 0.5 Bar
- Removable yellow clip for simple installation
- 1st, 2nd & 3rd family gases to EN 437
- Fire classification: B-s1-d0

Tightening Torque

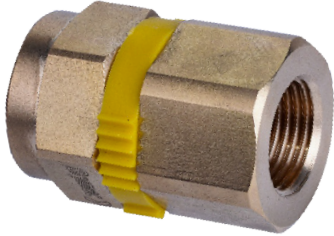
TUBE DIAMETER DN	Min (Nm)	Max (Nm)
DN15	65	95
DN20	90	130
DN25	105	150
DN32	125	170

Remove yellow ring between nut and fitting, tighten nut by hand firstly, then to correct tightening torque as indicated above.

Perfect seal and full corrosion resistance integrity between pipe and fitting without any wrapping required.



CSST Female BSPP Adaptor CSS 46



This Brymec product is not manufactured by and has no connection with GFS Flex



KM 714530
BS EN 15266: 2007



Technical Data

- Thread BSP parallel
- Manufactured to BS EN 15266 CSST Gas installation in buildings
- Max operating pressure 0.5 Bar
- Removable yellow clip for simple installation
- 1st, 2nd & 3rd family gases to EN 437
- Fire classification: B-s1-d0

Tightening Torque

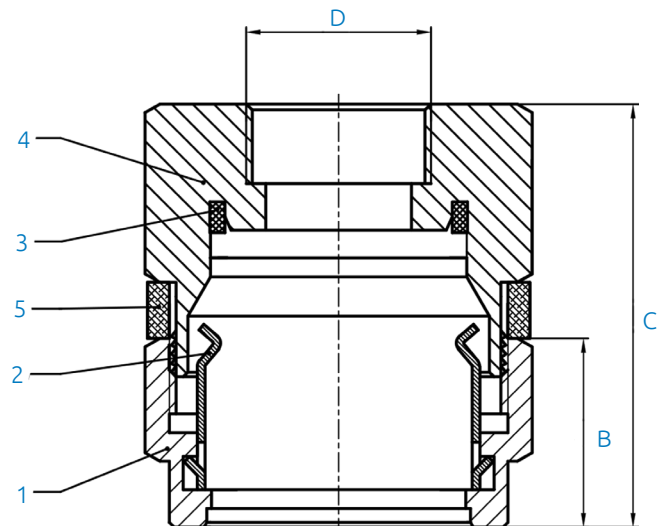
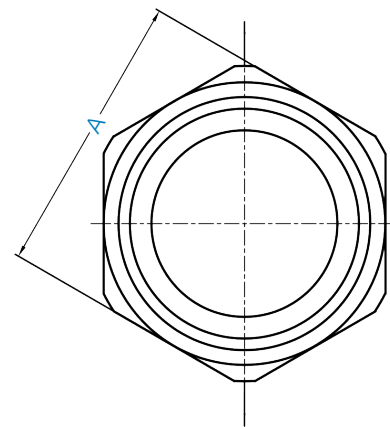
TUBE DIAMETER DN	Min (Nm)	Max (Nm)
DN15	65	95
DN20	90	130
DN25	105	150
DN32	125	170

Features and Benefits

- Easy installation
- No welding, no painting, no overwrapping required
- Chemical resistant
- Push fit and tighten fittings provide a fast connection and perfectly even flare
- Compression fittings provide dual metal/metal and silicone rubber seal
- Time and labour saving
- 10 year warranty on CSST and fittings

Materials Specifications

NO.	COMPONENT	MATERIAL	REF
1	Nut	CW 614 N	EN 12165
2	Retainer	Cw458K	EN 12164
3	Flat Gasket	NBR	EN 549/A2/H3
4	Nipple Body	CW 614 N	EN 12164
5	Clip Ring	Plastic	-



Product Codes & Dimensions

STOCK NO.	SIZE	A (mm)	B (mm)	C (mm)	D (BSPP)
29067	DN15 x 1/2"	32	23.0	52.5	G1/2
29069	DN20 x 3/4"	35	22.5	52.5	G3/4

CSST Corrugated Stainless Steel Flexible Gas Pipe



CSS 90



KM 714530
BS EN 15266: 2007



Features and Benefits

- Easy installation
- High flexibility
- No welding, no painting, no overwrapping required
- Crush & impact resistant
- Chemical resistant
- Abrasion resistant outer cover
- Time and labour saving
- 10 year warranty on CSST and fittings

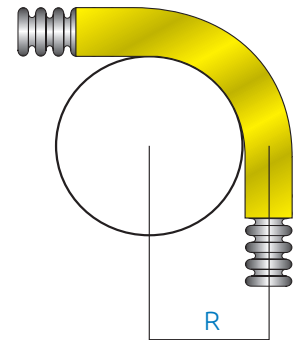
Technical Data

- Manufactured to BS EN 15266 CSST Gas installation in buildings
- Max operating pressure 0.5 Bar
- 1st, 2nd & 3rd family gases to EN 437
- Fire classification: B-s1-d0

Bend Radius

TUBE DIAMETER DN	Recommended bending radius	Minimum bending radius
DN15	72	25
DN20	90	30
DN25	125	45
DN32	140	60

Do not bend / unbend tubing multiple times. Tighter bend radius will increase pressure drop – please adhere to above guidelines



Available Pipe Configurations

STOCK NO.	SIZE	LENGTH
29019	DN15	30m
29020	DN15	75m
29022	DN20	30m
29023	DN20	75m
29024	DN25	30m
29025	DN25	45m
29026	DN25	75m
29028	DN32	45m
29029	DN32	75m

Materials Specifications

NO.	COMPONENT	MATERIAL
1	Hose	AISI 316L/AISI 304L Stainless steel
2	Pipe Cover	Yellow Polyolefin

Pipe Dimensions (mm)

DN	A (mm)	B (mm)	C (mm)	D (mm)
15	16	22.50	21.40	0.6
20	20	25.40	24.30	0.6
25	25	32.30	31.20	0.6
32	32	39.80	38.70	0.6

