



EN

# Tube & connector fittings

## Adaptors/Straight Connectors

| OPTIONS                   |                              |          |
|---------------------------|------------------------------|----------|
| Size                      | Ideal Use                    | Pack Qty |
| 6mm – 10mm                | 1/4" to 3/8"                 | 5        |
| 6mm, 10mm or 12mm to 16mm | 1/4" or 3/8" or 5/8" to 1/2" | 5        |



## Non-return Valves

| OPTIONS     |                            |          |
|-------------|----------------------------|----------|
| Size        | Ideal Use                  | Pack Qty |
| 6mm (1/4")  | Prevents backflow of water | 5        |
| 10mm (3/8") | Prevents backflow of water | 5        |

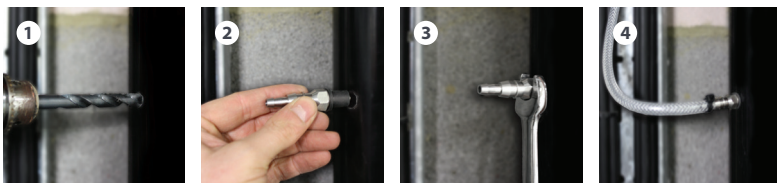
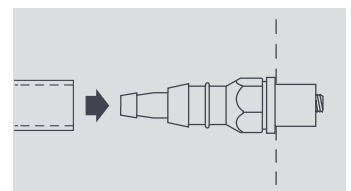
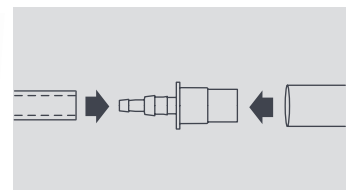
## Hose to Hose

| OPTIONS     |                    |          |
|-------------|--------------------|----------|
| Size        | Ideal Use          | Pack Qty |
| 1/4"        | Straight Connector | 5        |
| 3/8"        | Straight Connector | 5        |
| 3/8" - 1/4" | Straight Connector | 5        |
| 1/4"        | Straight Connector | 5        |
| 3/8"        | Straight Connector | 5        |
| 1/4"        | Straight Connector | 6        |
| 3/8"        | Straight Connector | 1        |



## Hose to Overflow or Waste/Soil Pipe

| OPTIONS  |   |          |
|--|---|----------|
| Size   | Ideal Use   | Pack Qty |
| 6mm (1/4") or 10mm (3/8") – 21mm overflow pipe   | Hose to Overflow  | 3        |
| 6mm (1/4") or 10mm (3/8") – self sealing adaptor | Hose to Waste/Soil Pipe (Drill hole to 11.5mm diameter) | 3        |



Note: All connectors should be fitted with the relevant cable ties