

# Copper Press Coupler (M-Profile)

## MCP 01



### Features & Benefits

- Durable and secure leak proof joint
- Braze free, permanent joint - no hot works required
- Huge time and resource savings
- 25 Year warranty
- Blue plastic film which will fall off when crimped for easy identification of pressed joint
- 2 point press
- Dust Covers

### Material Specifications

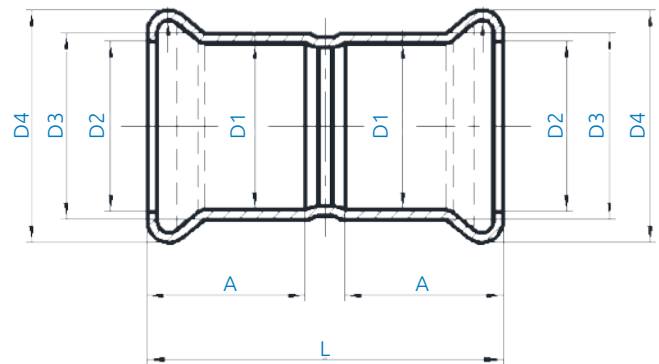
NO	Description	Materials
1	Body	Cu-DHP (CW024A)
2	Crimp indicator film	PVC, Blue
3	O-Ring	EPDM
4	Dust Cap	PE

### Technical Data

- Working Pressure 16 Bar @ 95°C
- "M" profile press jaws or slings
- Approved tools include Novapress, REMS, Rothenberger and Ridgid

### Applicable Standards

- WRAS approved
- For use with type TX copper tubing conformant to EN 1057
- Manufactured to EN1254 standard



### Product Codes and Dimensions

STOCK NO.	D1	D2	D3	D4	A	L
27940	15	15.6	18	23	19	44
27941	22	22.8	25	31.3	20	46
27942	28	28.8	31	37.4	22	50
27943	35	35.7	38.3	44.7	25	58
27944	42	42.8	45.3	53.5	29	67
27945	54	54.8	57.3	65.3	34	80
27946	67	69.1	71.7	82.6	48	107
27947	76	78.6	81.1	94.4	49	108
27949	108	110.9	113.8	132.1	65	147

# Copper Press Fitting Reducer (M-Profile)

## MCP 03



### Technical Data

- Working Pressure 16 Bar @ 95°C
- "M" profile press jaws or slings
- Approved tools include Novapress, REMS, Rothenberger and Ridgid

### Applicable Standards

- WRAS approved
- For use with type TX copper tubing conformant to EN 1057
- Manufactured to EN1254 standard

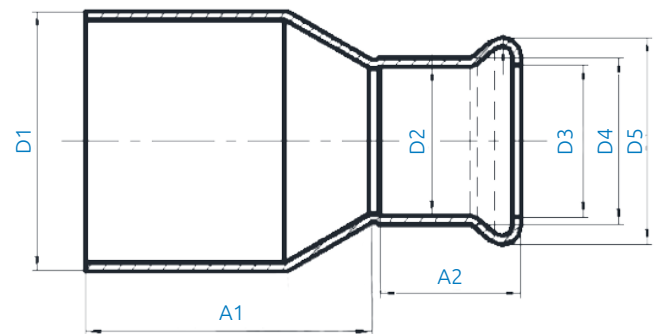


### Features & Benefits

- Durable and secure leak proof joint
- Braze free, permanent joint - no hot works required
- Huge time and resource savings
- 25 Year warranty
- Blue plastic film which will fall off when crimped for easy identification of pressed joint
- 2 point press
- Dust Covers

### Material Specifications

NO	Description	Materials
1	Body	Cu-DHP (CW024A)
2	Crimp indicator film	PVC, Blue
3	O-Ring	EPDM
4	Dust Cap	PE



### Product Codes and Dimensions

STOCK NO.	D1	D2	D3	D4	D5	A1	A2
27915	22	15	15.6	18	23	31.5	19
27916	28	15	15.6	18	23	36.5	19
27917	28	22	22.8	25	31.3	32	20
27918	35	22	22.8	25	31.3	43	20
27919	35	28	28.8	31	37.4	40	20
27920	42	22	22.8	25	31.3	49	20
27921	42	28	28.8	31	37.4	46	20
27922	42	35	35.7	38.3	44.7	44	25
27932	54	28	28.8	31	37.4	61	20
27923	54	35	35.7	38.3	44.7	58	25
27924	54	42	42.8	45.3	53.5	53	29
28231	67	28	28.8	31	37.4	88	20
28232	67	35	35.7	38.3	44.7	84	25
28233	67	42	42.8	45.3	53.5	78	29

Continued on next page

# Copper Press Fitting Reducer (M-Profile)

## MCP 03



### Product Codes and Dimensions Continued

STOCK NO.	D1	D2	D3	D4	D5	A1	A2
27925	67	54	54.8	57.3	65.3	70	34
28234	76	35	35.7	38.3	44.7	82	25
27926	76	54	54.8	57.3	65.3	76	-
28236	76	67	69.1	71.7	82.6	64	49
28237	108	42	42.8	45.3	53.5	130	29
27929	108	54	54.8	57.3	65.3	113	-
28238	108	67	69.1	71.7	82.6	108	48
27930	108	76	78.6	81.1	94.4	98	-

# Copper Press Reducing Coupler (M-Profile)

## MCP 04



### Technical Data

- Working Pressure 16 Bar @ 95°C
- "M" profile press jaws or slings
- Approved tools include Novapress, REMS, Rothenberger and Ridgid

### Applicable Standards

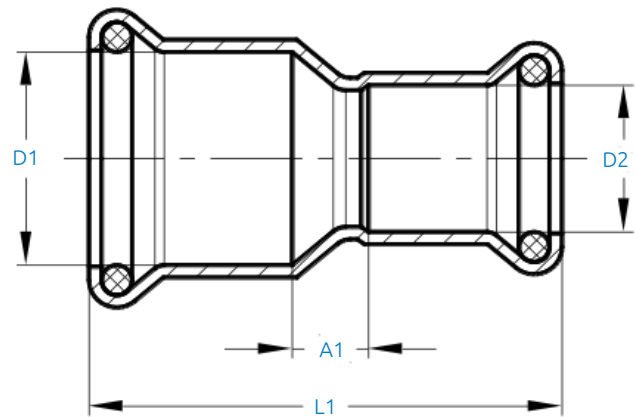
- WRAS approved
- For use with type TX copper tubing conformant to EN 1057
- Manufactured to EN1254 standard

### Features & Benefits

- Durable and secure leak proof joint
- Braze free, permanent joint - no hot works required
- Huge time and resource savings
- 25 Year warranty
- Blue plastic film which will fall off when crimped for easy identification of pressed joint
- 2 point press
- Dust Covers

### Material Specifications

NO	Description	Materials
1	Body	Cu-DHP (CW024A)
2	Crimp indicator film	PVC, Blue
3	O-Ring	EPDM
4	Dust Cap	PE



### Product Codes and Dimensions

STOCK NO.	D1	D2	L1	A1
27900	22	15	50	8.5
27901	28	15	55	12
27902	28	22	52	8
27903	35	22	61	14
27904	35	28	60	10
27905	42	22	70	19
27906	42	28	67.5	14.5
27907	42	35	68	10.5
27908	54	28	81	23
27909	54	35	81	19
27910	54	42	81	14

# Copper Press Slip Coupler (M-Profile)

## MCP 05



### Technical Data

- Working Pressure 16 Bar @ 95°C
- "M" profile press jaws or slings
- Approved tools include Novapress, REMS, Rothenberger and Ridgid

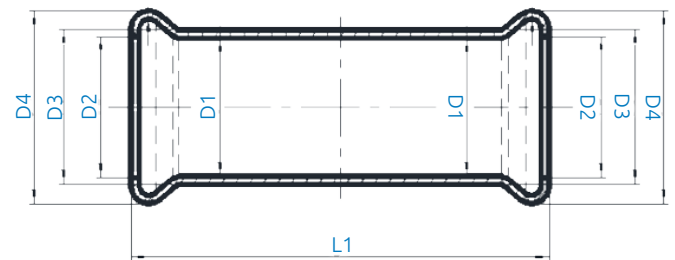
### Applicable Standards

- WRAS approved
- For use with type TX copper tubing conformant to EN 1057
- Manufactured to EN1254 standard



### Features & Benefits

- Durable and secure leak proof joint
- Braze free, permanent joint - no hot works required
- Huge time and resource savings
- 25 Year warranty
- Blue plastic film which will fall off when crimped for easy identification of pressed joint
- 2 point press
- Dust Covers



### Material Specifications

NO	Description	Materials
1	Body	Cu-DHP (CW024A)
2	Crimp indicator film	PVC, Blue
3	O-Ring	EPDM
4	Dust Cap	PE

### Product Codes and Dimensions

STOCK NO.	D1	D2	D3	D4	L1
27950	15	15.6	18	23	80
27951	22	22.8	25	31.3	84
27952	28	28.8	31	37.4	91
27953	35	35.7	38.3	44.7	95
27954	42	42.8	45.3	53.5	115
27955	54	54.8	57.3	65.3	139
27956	67	69.1	71.7	82.6	220
27957	76	78.6	81.1	94.4	230

# Copper Press F x F 90° Bend (M-Profile) MCP 10



## Features & Benefits

- Durable and secure leak proof joint
- Braze free, permanent joint - no hot works required
- Huge time and resource savings
- 25 Year warranty
- Blue plastic film which will fall off when crimped for easy identification of pressed joint
- 2 point press
- Dust Covers

## Material Specifications

NO	Description	Materials
1	Body	Cu-DHP (CW024A)
2	Crimp indicator film	PVC, Blue
3	O-Ring	EPDM
4	Dust Cap	PE

## Product Codes and Dimensions

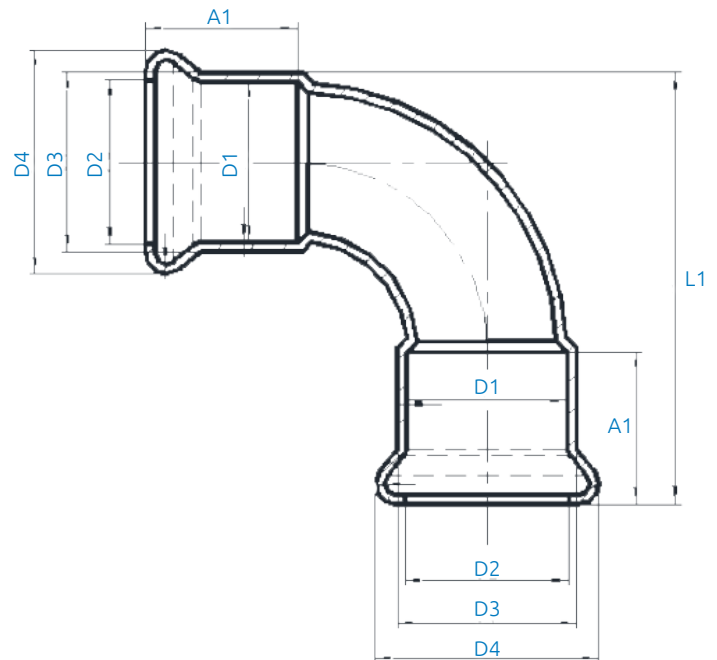
STOCK NO.	D1	D2	D3	D4	A1	L1
27810	15	15.6	18	23	19	47
27811	22	22.8	25	31.3	20	60
27812	28	28.8	31	37.4	22	73
27813	35	35.7	38.3	44.7	25	84
27814	42	42.8	45.3	53.5	29	99
27815	54	54.8	57.3	65.3	34	126
27816	67	69.1	71.7	82.6	48	163
27817	76	78.6	81.1	94.4	49	186
27819	108	110.9	113.8	132.1	65	256

## Technical Data

- Working Pressure 16 Bar @ 95°C
- "M" profile press jaws or slings
- Approved tools include Novapress, REMS, Rothenberger and Ridgid

## Applicable Standards

- WRAS approved
- For use with type TX copper tubing conformant to EN 1057
- Manufactured to EN1254 standard



# Copper Press F x F 45° Bend (M-Profile) MCP 11



## Features & Benefits

- Durable and secure leak proof joint
- Braze free, permanent joint - no hot works required
- Huge time and resource savings
- 25 Year warranty
- Blue plastic film which will fall off when crimped for easy identification of pressed joint
- 2 point press
- Dust Covers

## Material Specifications

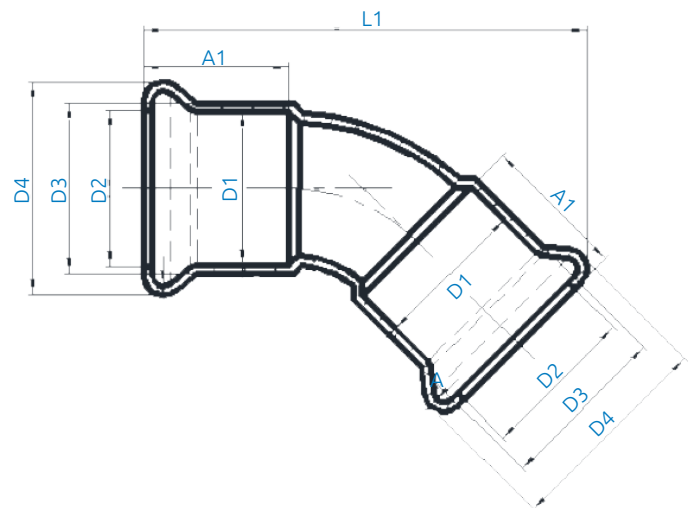
NO	Description	Materials
1	Body	Cu-DHP (CW024A)
2	Crimp indicator film	PVC, Blue
3	O-Ring	EPDM
4	Dust Cap	PE

## Technical Data

- Working Pressure 16 Bar @ 95°C
- "M" profile press jaws or slings
- Approved tools include Novapress, REMS, Rothenberger and Ridgid

## Applicable Standards

- WRAS approved
- For use with type TX copper tubing conformant to EN 1057
- Manufactured to EN1254 standard



## Product Codes and Dimensions

STOCK NO.	D1	D2	D3	D4	A1	L1
27830	15	15.6	18	23	19	54
27831	22	22.8	25	31.3	20	64
27832	28	28.8	31	37.4	22	74
27833	35	35.7	38.3	44.7	25	82
27834	42	42.8	45.3	53.5	29	97
27835	54	54.8	57.3	65.3	34	118
27836	67	69.1	71.7	82.6	48	169
27837	76	78.6	81.1	94.4	49	-
27839	108	110.9	113.8	132.1	65	-

# Copper Press 90° M x F Bend (M-Profile)

## MCP 12



### Technical Data

- Working Pressure 16 Bar @ 95°C
- "M" profile press jaws or slings
- Approved tools include Novapress, REMS, Rothenberger and Ridgid

### Applicable Standards

- WRAS approved
- For use with type TX copper tubing conformant to EN 1057
- Manufactured to EN1254 standard

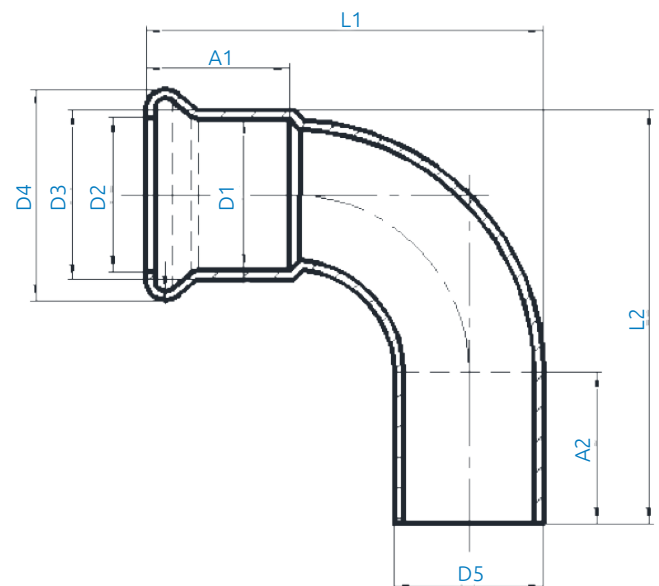


### Features & Benefits

- Durable and secure leak proof joint
- Braze free, permanent joint - no hot works required
- Huge time and resource savings
- 25 Year warranty
- Blue plastic film which will fall off when crimped for easy identification of pressed joint
- 2 point press
- Dust Covers

### Material Specifications

NO	Description	Materials
1	Body	Cu-DHP (CW024A)
2	Crimp indicator film	PVC, Blue
3	O-Ring	EPDM
4	Dust Cap	PE



### Product Codes and Dimensions

STOCK NO.	D1	D2	D3	D4	D5	A1	A2	L1	L2
27800	15	15.6	18	23	15	19	22	44.5	59
27801	22	22.8	25	31.3	22	20	23	57.5	71
27802	28	28.8	31	37.4	28	20	25	70	79.5
27803	35	35.7	38.3	44.7	35	28	25	81.5	92
27804	42	42.8	45.3	53.5	42	29	32	96	107.5
27805	54	54.8	57.3	65.3	54	34	37	123	133.5
27806	67	69.1	71.7	82.6	67	49	52	158	179
27807	76	78.6	81.1	94.4	76	49	54	184	201
27809	108	110.9	113.8	132.1	108	65	71	253	266



# Copper Press 45° M x F Bend (M-Profile)

## MCP 13



### Technical Data

- Working Pressure 16 Bar @ 95°C
- "M" profile press jaws or slings
- Approved tools include Novapress, REMS, Rothenberger and Ridgid

### Applicable Standards

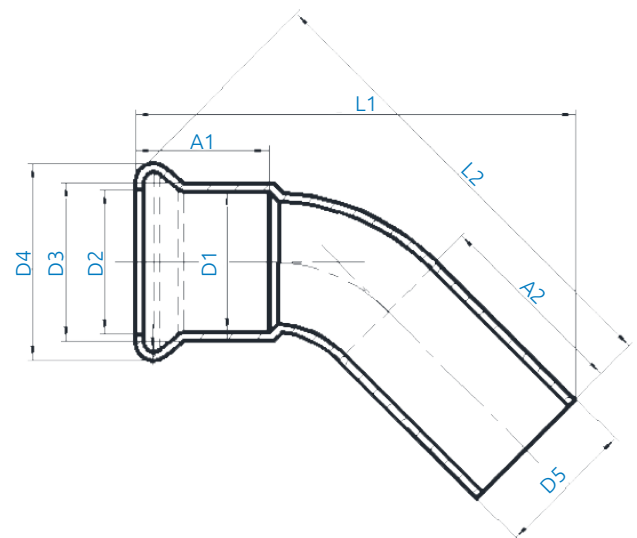
- WRAS approved
- For use with type TX copper tubing conformant to EN 1057
- Manufactured to EN1254 standard

### Features & Benefits

- Durable and secure leak proof joint
- Braze free, permanent joint - no hot works required
- Huge time and resource savings
- 25 Year warranty
- Blue plastic film which will fall off when crimped for easy identification of pressed joint
- 2 point press
- Dust Covers

### Material Specifications

NO	Description	Materials
1	Body	Cu-DHP (CW024A)
2	Crimp indicator film	PVC, Blue
3	O-Ring	EPDM
4	Dust Cap	PE



### Product Codes and Dimensions

STOCK NO.	D1	D2	D3	D4	D5	A1	A2	L1	L2
27820	15	15.6	18	23	15	19	22	57.5	62
27821	22	22.8	25	31.3	22	20	23	69.5	74.5
27822	28	28.8	31	37.4	28	20	25	80	86
27823	35	35.7	38.3	44.7	35	28	25	86	90.5
27824	42	42.8	45.3	53.5	42	29	32	103	109
27825	54	54.8	57.3	65.3	54	34	37	123	129
27826	67	69.1	71.7	82.6	67	49	52	177	178
27827	76	78.6	81.1	94.4	76	49	-	-	-
27829	108	110.9	113.8	132.1	108	65	-	-	-

# Copper Press Equal Tee (M-Profile) MCP 30



## Features & Benefits

- Durable and secure leak proof joint
- Braze free, permanent joint - no hot works required
- Huge time and resource savings
- 25 Year warranty
- Blue plastic film which will fall off when crimped for easy identification of pressed joint
- 2 point press
- Dust Covers

## Material Specifications

NO	Description	Materials
1	Body	Cu-DHP (CW024A)
2	Crimp indicator film	PVC, Blue
3	O-Ring	EPDM
4	Dust Cap	PE

## Product Codes and Dimensions

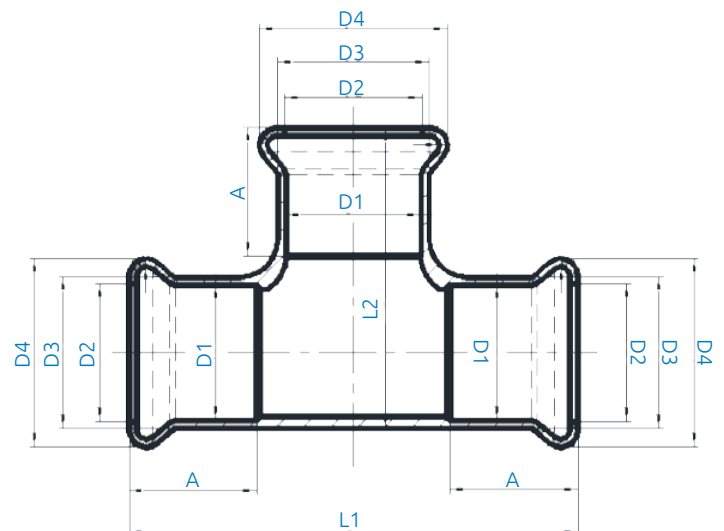
STOCK NO.	D1	D2	D3	D4	A	L1	L2
27850	15	15.6	18	23	19	64	41
27851	22	22.8	25	31.3	20	74	49.5
27852	28	28.8	31	37.4	22	84	57
27853	35	35.7	38.3	44.7	25	100	69
27854	42	42.8	45.3	53.5	29	116	86
27855	54	54.8	57.3	65.3	34	139	98
27856	67	69.1	71.7	82.6	48	189	133
27857	76	78.6	81.1	94.4	49	208	139.5
27859	108	110.9	113.8	132.1	65	273	196

## Technical Data

- Working Pressure 16 Bar @ 95°C
- "M" profile press jaws or slings
- Approved tools include Novapress, REMS, Rothenberger and Ridgid

## Applicable Standards

- WRAS approved
- For use with type TX copper tubing conformant to EN 1057
- Manufactured to EN1254 standard



# Copper Press Reducing Tee (M-Profile)



## MCP 31



### Technical Data

- Working Pressure 16 Bar @ 95°C
- "M" profile press jaws or slings
- Approved tools include Novapress, REMS, Rothenberger and Ridgid

### Applicable Standards

- WRAS approved
- For use with type TX copper tubing conformant to EN 1057
- Manufactured to EN1254 standard

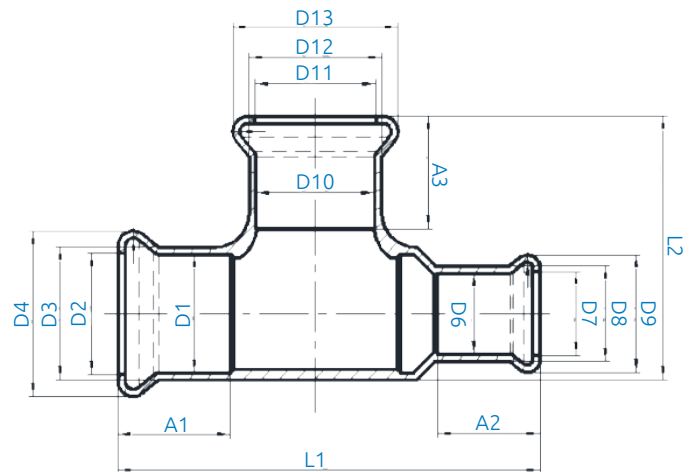


### Features & Benefits

- Durable and secure leak proof joint
- Braze free, permanent joint - no hot works required
- Huge time and resource savings
- 25 Year warranty
- Blue plastic film which will fall off when crimped for easy identification of pressed joint
- 2 point press
- Dust Covers

### Material Specifications

NO	Description	Materials
1	Body	Cu-DHP (CW024A)
2	Crimp indicator film	PVC, Blue
3	O-Ring	EPDM
4	Dust Cap	PE



### Product Codes and Dimensions

STOCK NO.	D1	D2	D3	D4	A	R											
27860	-	-	-	-	-	-	-	-	-	-	-	-	-	-	-	-	-
27861	22	22.8	25	31.3	15	15.6	18	23	15	15.6	18	23	20	19	19	80.5	50.5
27862	22	22.8	25	31.3	22	22.8	25	31.3	15	15.6	18	23	20	20	19	74	50.5
27863	22	22.8	25	31.3	15	15.6	18	23	22	22.8	25	31.3	20	19	20	83.5	49.5
27865	-	-	-	-	-	-	-	-	-	-	-	-	-	-	-	-	-
27866	28	28.8	31	37.4	28	28.8	31	37.4	15	15.6	18	23	22	22	19	84	56
27867	28	28.8	31	37.4	22	22.8	25	31.3	22	22.8	25	31.3	22	20	20	88	57
27868	28	28.8	31	37.4	28	28.8	31	37.4	22	22.8	25	31.3	22	22	20	84	56.5
27869	-	-	-	-	-	-	-	-	-	-	-	-	-	-	-	-	-
27870	-	-	-	-	-	-	-	-	-	-	-	-	-	-	-	-	-
27872	35	35.7	38.3	44.7	35	35.7	38.3	44.7	15	15.6	18	23	25	19	25	84	65
27874	-	-	-	-	-	-	-	-	-	-	-	-	-	-	-	-	-

Continued on next page

# Copper Press Reducing Tee (M-Profile)

## MCP 31



### Product Codes and Dimensions Continued

STOCK NO.	D1	D2	D3	D4	D6	D7	D8	D9	D10	D11	D12	D13	A1	A2	A3	L1	L2
27875	35	35.7	38.3	44.7	35	35.7	38.3	44.7	22	22.8	25	31.3	25	25	20	91	63
27876	35	35.7	38.3	44.7	28	28.8	31	37.4	28	28.8	31	37.4	25	22	22	104	65
27877	35	35.7	38.3	44.7	35	35.7	38.3	44.7	28	28.8	31	37.4	25	25	22	100	64
27880	42	42.8	45.3	53.5	42	42.8	45.3	53.5	15	15.6	18	23	29	29	19	98	83
27881	42	42.8	45.3	53.5	42	42.8	45.3	53.5	22	22.8	25	31.3	29	29	20	98	76
27882	42	42.8	45.3	53.5	42	42.8	45.3	53.5	28	28.8	31	37.4	29	29	22	112	71.5
27884	42	42.8	45.3	53.5	42	42.8	45.3	53.5	35	35.7	38.3	44.7	29	29	25	112	74.5
27896	-	-	-	-	-	-	-	-	-	-	-	-	-	-	-	-	-
27885	54	54.8	57.3	65.3	54	54.8	57.3	65.3	22	22.8	25	31.3	34	34	20	123	76
27886	54	54.8	57.3	65.3	54	54.8	57.3	65.3	28	28.8	31	37.4	34	34	22	123	83.5
27887	54	54.8	57.3	65.3	54	54.8	57.3	65.3	35	35.7	38.3	44.7	34	34	25	122	86.5
27888	54	54.8	57.3	65.3	54	54.8	57.3	65.3	42	42.8	45.3	53.5	34	34	29	138	93.5
28255	67	69.1	71.7	82.6	67	69.1	71.7	82.6	28	28.8	31	37.4	48	48	22	179	129
27889	-	-	-	-	-	-	-	-	-	-	-	-	-	-	-	-	-
28260	-	-	-	-	-	-	-	-	-	-	-	-	-	-	-	-	-
27890	-	-	-	-	-	-	-	-	-	-	-	-	-	-	-	-	-
27893	108	110.9	113.8	132.1	108	110.9	113.8	132.1	54	54.8	57.3	65.3	65	65	34	216	163

# Copper-Press Extended Spigot Manifold Tee (M-Profile)



## Technical Data

- Working Pressure 16 Bar @ 95°C
- "M" Profile Press Jaws or slings
- Approved tools include Novapress, REMS, Rothenberger and Ridgid

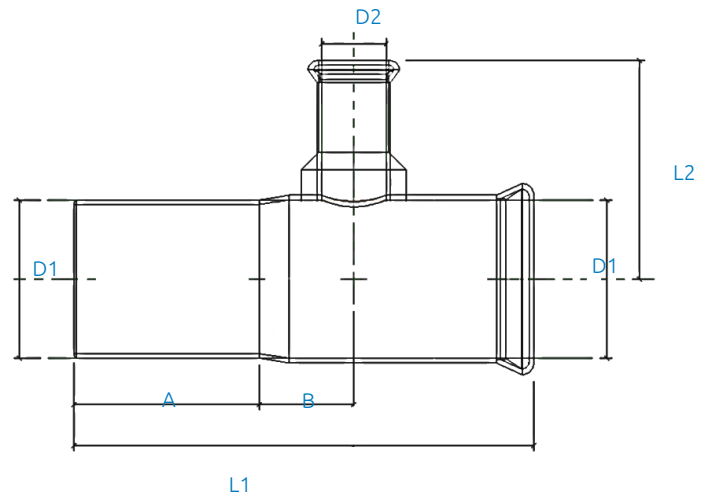
## Applicable Standards

- For use with type TX Copper tubing conformant to EN 1057
- Manufactured to EN1254 Standard



## Features & Benefits

- Quickly and easily fabricate water distribution manifolds
- Reduce the number of joints normally required with conventional methods
- Accurately space pipes to allow for water meter assembly / valves / metering points etc
- Durable and secure leak proof joint
- Braze free, permanent joint - No hot works required
- Huge time and resource savings
- 25 year warranty
- Blue plastic crimp indicator which falls off when crimped for easy identification of pressed joint
- 2 point press
- Dust covers



UK Patent Pending

## Material Specifications

Description	Materials
Body	Cu-DHP (CW024A)
Crimp indicator film	PVC, Blue
O-Ring	EPDM
Dust Cap	PE

## Product Codes and Dimensions

STOCK NO.	D1 (mm)	D2 (mm)	A (mm)	B (mm)	L1 (mm)	L2 (mm)
27897	54	22	63	32	157	75
27898	54	28	63	38	163	62.5

# Copper Press Female Branch Reducing Tee (M-Profile)

## MCP 35



### Technical Data

- Working Pressure 16 Bar @ 95°C
- "M" profile press jaws or slings
- Approved tools include Novapress, REMS, Rothenberger and Ridgid
- Female thread BSPP

### Applicable Standards

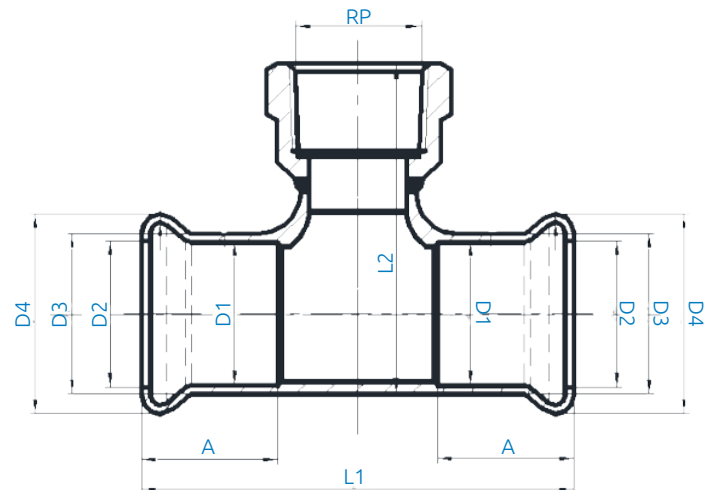
- WRAS approved
- For use with type TX copper tubing conformant to EN 1057
- Manufactured to EN1254 standard

### Features & Benefits

- Durable and secure leak proof joint
- Braze free, permanent joint - no hot works required
- Huge time and resource savings
- 25 Year warranty
- Blue plastic film which will fall off when crimped for easy identification of pressed joint
- 2 point press
- Dust Covers

### Material Specifications

NO	Description	Materials
1	Body	Cu-DHP (CW024A)
2	Crimp indicator film	PVC, Blue
3	O-Ring	EPDM
4	Dust Cap	PE



### Product Codes and Dimensions

STOCK NO.	D1	D2	D3	D4	A	L1	L2	RP
28101	15	15.6	18	23	19	64	48.5	1/2"
28102	22	22.8	25	31.3	20	74	55	1/2"
28104	28	28.8	31	37.4	22	84	63	1/2"
28106	35	35.7	38.3	44.7	25	91	68	1/2"
28108	42	42.8	45.3	53.5	29	98	75	1/2"
28110	54	54.8	57.3	65.3	34	123	83	1/2"

# Copper Press Male Iron Adaptor (M-Profile)

## MCP 45



### Technical Data

- Working Pressure 16 Bar @ 95°C
- "M" profile press jaws or slings
- Approved tools include Novapress, REMS, Rothenberger and Ridgid
- Male thread BSPT

### Applicable Standards

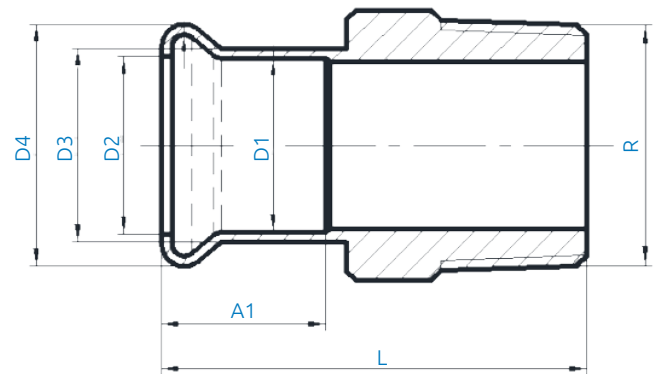
- WRAS approved
- For use with type TX copper tubing conformant to EN 1057
- Manufactured to EN1254 standard

### Features & Benefits

- Durable and secure leak proof joint
- Braze free, permanent joint - no hot works required
- Huge time and resource savings
- 25 Year warranty
- Blue plastic film which will fall off when crimped for easy identification of pressed joint
- 2 point press
- Dust Covers

### Material Specifications

NO	Description	Materials
1	Body	Cu-DHP (CW024A)
2	Crimp indicator film	PVC, Blue
3	O-Ring	EPDM
4	Dust Cap	PE



### Product Codes and Dimensions

STOCK NO.	D1	D2	D3	D4	A1	L	R
28115	15	15.6	18	23	19	37	3/8"
28116	15	15.6	18	23	19	39	1/2"
28117	15	15.6	18	23	19	40	3/4"
28118	22	22.8	25	31.3	20	41	1/2"
28119	22	22.8	25	31.3	20	41	3/4"
28120	22	22.8	25	31.3	20	46	1"
28121	28	28.8	31	37.4	22	46	3/4"
28122	28	28.8	31	37.4	22	46	1"
28125	35	35.7	38.3	44.7	25	53	1 1/4"
28128	42	42.8	45.3	53.5	29	58	1 1/2"
28130	54	54.8	57.3	65.3	34	65	2"
28131	67	69.1	71.7	82.6	48	103	2 1/2"
28133	76	78.6	81.1	94.4	49	101	3"

# Copper Press Female Adaptor (M-Profile)

## MCP 46



### Features & Benefits

- Durable and secure leak proof joint
- Braze free, permanent joint - no hot works required
- Huge time and resource savings
- 25 Year warranty
- Blue plastic film which will fall off when crimped for easy identification of pressed joint
- 2 point press
- Dust Covers

### Material Specifications

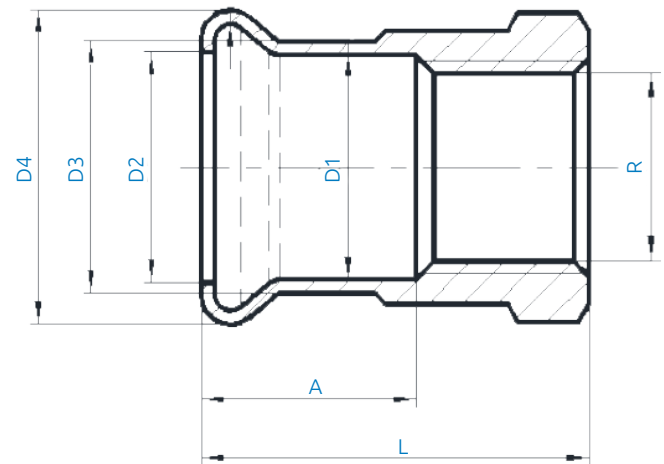
NO	Description	Materials
1	Body	Cu-DHP (CW024A)
2	Crimp indicator film	PVC, Blue
3	O-Ring	EPDM
4	Dust Cap	PE

### Technical Data

- Working Pressure 16 Bar @ 95°C
- "M" profile press jaws or slings
- Approved tools include Novapress, REMS, Rothenberger and Ridgid
- Female thread BSPP

### Applicable Standards

- WRAS approved
- For use with type TX copper tubing conformant to EN 1057
- Manufactured to EN1254 standard



### Product Codes and Dimensions

STOCK NO.	D1	D2	D3	D4	A	L	R
28151	15	15.6	18	23	19	40	1/2"
28153	22	22.8	25	31.3	20	38	1/2"
28154	22	22.8	25	31.3	20	40	3/4"
28157	28	28.8	31	37.4	22	47	1"
28160	35	35.7	38.3	44.7	25	52	1 1/4"
28163	42	42.8	45.3	53.5	29	56	1 1/2"
28165	54	54.8	57.3	65.3	34	65	2"
28166	67	69.1	71.7	82.6	48	97	2 1/2"
28169	76	78.6	81.1	94.4	49	101	3"



# Copper Press Male 90° Elbow (M-Profile) MCP 47



## Technical Data

- Working Pressure 16 Bar @ 95°C
- "M" profile press jaws or slings
- Approved tools include Novapress, REMS, Rothenberger and Ridgid

## Applicable Standards

- WRAS approved
- For use with type TX copper tubing conformant to EN 1057
- Manufactured to EN1254 standard

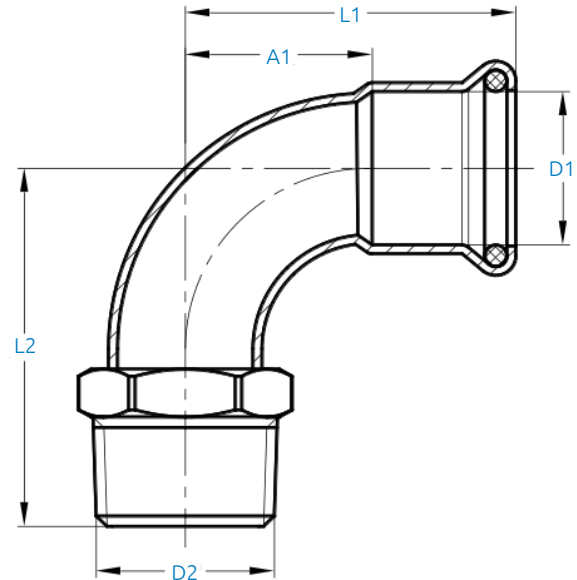


## Features & Benefits

- Durable and secure leak proof joint
- Braze free, permanent joint - no hot works required
- Huge time and resource savings
- 25 Year warranty
- Blue plastic film which will fall off when crimped for easy identification of pressed joint
- 2 point press
- Dust Covers

## Material Specifications

NO	Description	Materials
1	Body	Cu-DHP (CW024A)
2	Crimp indicator film	PVC, Blue
3	O-Ring	EPDM
4	Dust Cap	PE

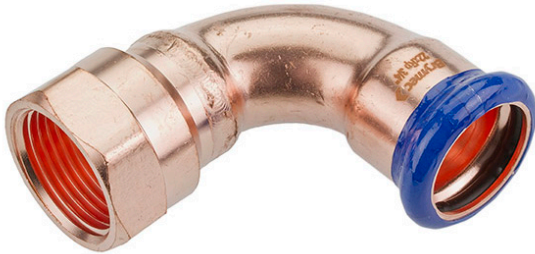


## Product Codes and Dimensions

STOCK NO.	D1	D2	L1	A1	L2
28081	15	½"	38	18	47

# Copper Press Female 90° Elbow (M-Profile)

## MCP 48



### Technical Data

- Working Pressure 16 Bar @ 95°C
- "M" profile press jaws or slings
- Approved tools include Novapress, REMS, Rothenberger and Ridgid

### Applicable Standards

- WRAS approved
- For use with type TX copper tubing conformant to EN 1057
- Manufactured to EN1254 standard

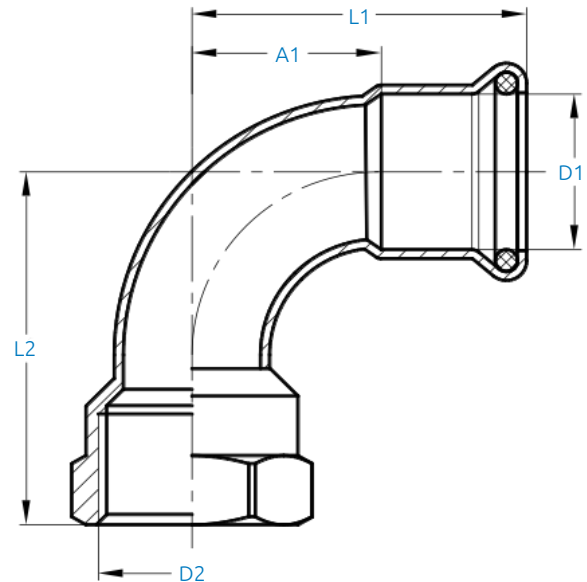


### Features & Benefits

- Durable and secure leak proof joint
- Braze free, permanent joint - no hot works required
- Huge time and resource savings
- 25 Year warranty
- Blue plastic film which will fall off when crimped for easy identification of pressed joint
- 2 point press
- Dust Covers

### Material Specifications

NO	Description	Materials
1	Body	Cu-DHP (CW024A)
2	Crimp indicator film	PVC, Blue
3	O-Ring	EPDM
4	Dust Cap	PE



### Product Codes and Dimensions

STOCK NO.	D1	D2	L1	A1	L2
28071	15	1/2"	38	18	43
28074	22	3/4"	47.5	26.5	52.5

# Copper Press Plug In Male Adaptor (M-Profile)

## MCP 49



### Technical Data

- Working Pressure 16 Bar @ 95°C
- "M" profile press jaws or slings
- Approved tools include Novapress, REMS, Rothenberger and Ridgid

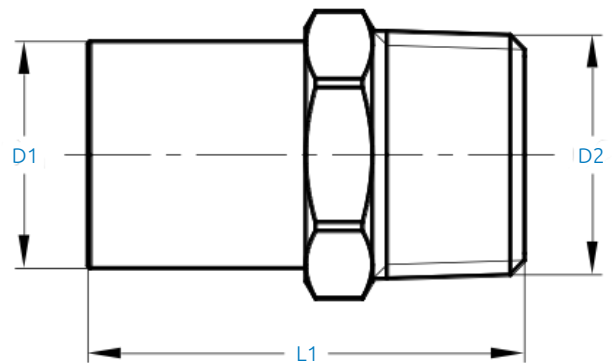
### Applicable Standards

- WRAS approved
- For use with type TX copper tubing conformant to EN 1057
- Manufactured to EN1254 standard



### Features & Benefits

- Durable and secure leak proof joint
- Braze free, permanent joint - no hot works required
- Huge time and resource savings
- 25 Year warranty
- Blue plastic film which will fall off when crimped for easy identification of pressed joint
- 2 point press
- Dust Covers



### Material Specifications

NO	Description	Materials
1	Body	Cu-DHP (CW024A)
2	Crimp indicator film	PVC, Blue
3	O-Ring	EPDM
4	Dust Cap	PE

### Product Codes and Dimensions

STOCK NO.	D1	D2	L1
28171	15	1/2"	47
28173	22	3/4"	50

# Copper Press Plug In Female Adaptor (M-Profile)

## MCP 50



### Technical Data

- Working Pressure 16 Bar @ 95°C
- "M" profile press jaws or slings
- Approved tools include Novapress, REMS, Rothenberger and Ridgid

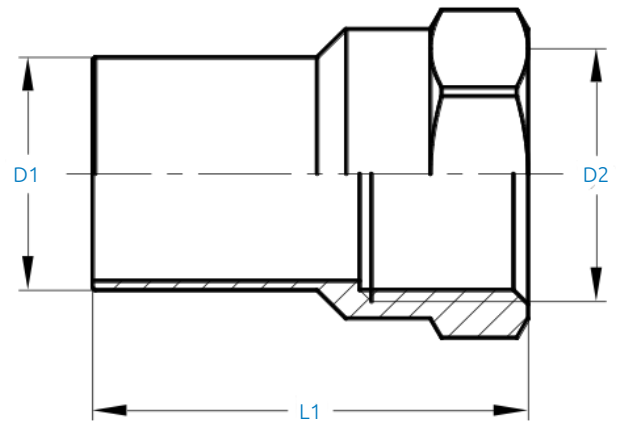
### Applicable Standards

- WRAS approved
- For use with type TX copper tubing conformant to EN 1057
- Manufactured to EN1254 standard



### Features & Benefits

- Durable and secure leak proof joint
- Braze free, permanent joint - no hot works required
- Huge time and resource savings
- 25 Year warranty
- Blue plastic film which will fall off when crimped for easy identification of pressed joint
- 2 point press
- Dust Covers



### Material Specifications

NO	Description	Materials
1	Body	Cu-DHP (CW024A)
2	Crimp indicator film	PVC, Blue
3	O-Ring	EPDM
4	Dust Cap	PE

### Product Codes and Dimensions

STOCK NO.	D1	D2	L1
28141	15	1/2"	44
28142	22	1/2"	46
28413	22	3/4"	46.5
28149	35	1"	54
28148	54	2"	71

# Copper Press Female Backplate Elbow (M-Profile)

## MCP 51



### Technical Data

- Working Pressure 16 Bar @ 95°C
- "M" profile press jaws or slings
- Approved tools include Novapress, REMS, Rothenberger and Ridgid

### Applicable Standards

- WRAS approved
- For use with type TX copper tubing conformant to EN 1057
- Manufactured to EN1254 standard

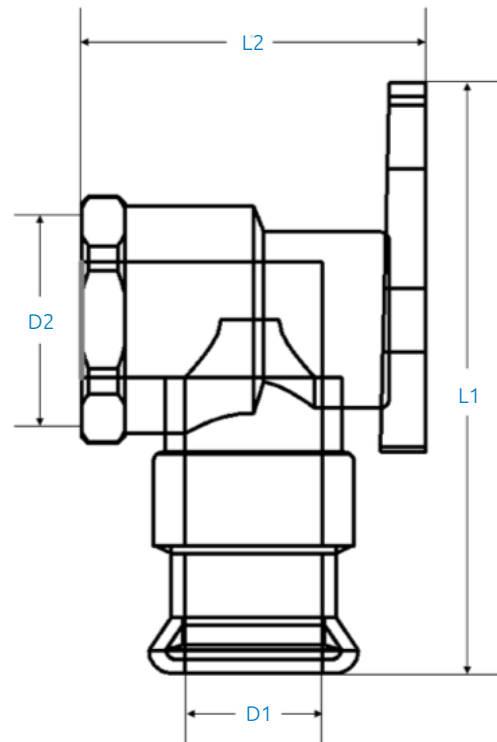


### Features & Benefits

- Durable and secure leak proof joint
- Braze free, permanent joint - no hot works required
- Huge time and resource savings
- 25 Year warranty
- Blue plastic film which will fall off when crimped for easy identification of pressed joint
- 2 point press
- Dust Covers

### Material Specifications

NO	Description	Materials
1	Body	Cu-DHP (CW024A)
2	Crimp indicator film	PVC, Blue
3	O-Ring	EPDM
4	Dust Cap	PE
5	Back Plate	Brass



### Product Codes and Dimensions

STOCK NO.	D1	D2	L1	L2
28225	15	1/2"	65	38

# Copper Press End Cap (M-Profile)

## MCP 55



### Technical Data

- Working Pressure 16 Bar @ 95°C
- "M" profile press jaws or slings
- Approved tools include Novapress, REMS, Rothenberger and Ridgid

### Applicable Standards

- WRAS approved
- For use with type TX copper tubing conformant to EN 1057
- Manufactured to EN1254 standard

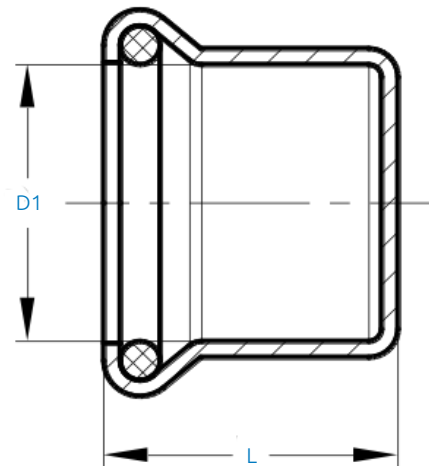


### Features & Benefits

- Durable and secure leak proof joint
- Braze free, permanent joint - no hot works required
- Huge time and resource savings
- 25 Year warranty
- Blue plastic film which will fall off when crimped for easy identification of pressed joint
- 2 point press
- Dust Covers

### Material Specifications

NO	Description	Materials
1	Body	Cu-DHP (CW024A)
2	Crimp indicator film	PVC, Blue
3	O-Ring	EPDM
4	Dust Cap	PE

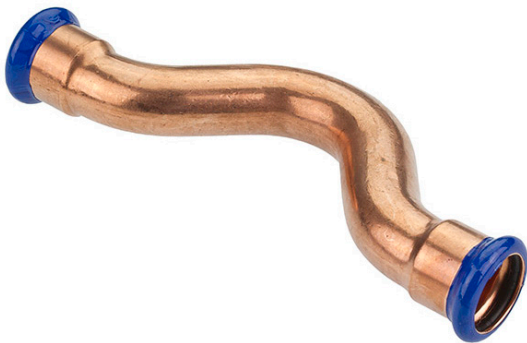


### Product Codes and Dimensions

STOCK NO.	D1	L1
27960	15	23
27961	22	24.5
27962	28	26.5
27963	35	29.5
27964	42	34
27965	54	39
27966	67	64
27967	76	58

# Copper Press Full Crossover (M-Profile)

## MCP 60



### Technical Data

- Working Pressure 16 Bar @ 95°C
- "M" profile press jaws or slings
- Approved tools include Novapress, REMS, Rothenberger and Ridgid

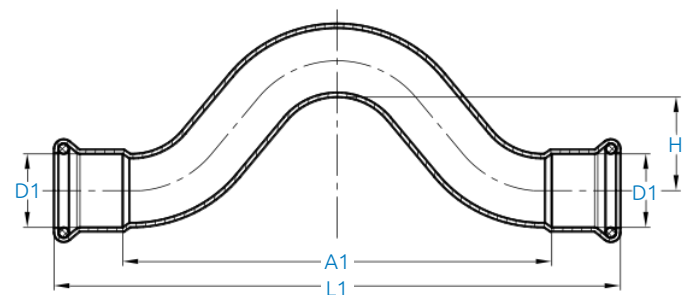
### Applicable Standards

- WRAS approved
- For use with type TX copper tubing conformant to EN 1057
- Manufactured to EN1254 standard



### Features & Benefits

- Durable and secure leak proof joint
- Braze free, permanent joint - no hot works required
- Huge time and resource savings
- 25 Year warranty
- Blue plastic film which will fall off when crimped for easy identification of pressed joint
- 2 point press
- Dust Covers



### Material Specifications

NO	Description	Materials
1	Body	Cu-DHP (CW024A)
2	Crimp indicator film	PVC, Blue
3	O-Ring	EPDM
4	Dust Cap	PE

### Product Codes and Dimensions

STOCK NO.	D1	L1	A1	H
27840	15	140	100	25
27841	22	170	128	27

# Copper Press Partial Crossover (M-Profile)

## MCP 61



### Technical Data

- Working Pressure 16 Bar @ 95°C
- "M" profile press jaws or slings
- Approved tools include Novapress, REMS, Rothenberger and Ridgid

### Applicable Standards

- WRAS approved
- For use with type TX copper tubing conformant to EN 1057
- Manufactured to EN1254 standard

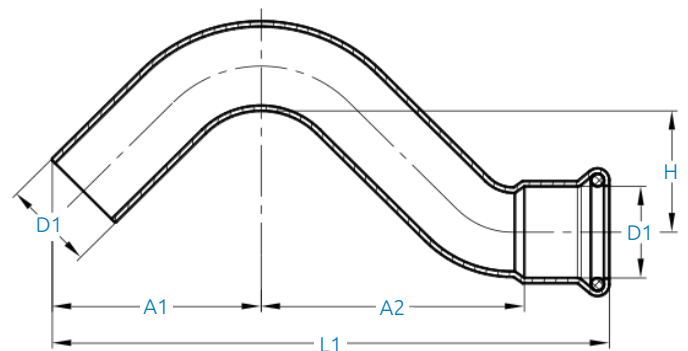


### Features & Benefits

- Durable and secure leak proof joint
- Braze free, permanent joint - no hot works required
- Huge time and resource savings
- 25 Year warranty
- Blue plastic film which will fall off when crimped for easy identification of pressed joint
- 2 point press
- Dust Covers

### Material Specifications

NO	Description	Materials
1	Body	Cu-DHP (CW024A)
2	Crimp indicator film	PVC, Blue
3	O-Ring	EPDM
4	Dust Cap	PE



### Product Codes and Dimensions

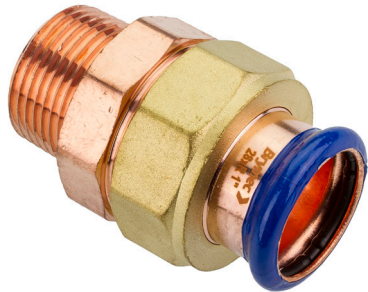
STOCK NO.	D1	L1	A1	A2	H
27845	15	109	39	50	25
27846	22	133	48	64	27



# Copper Press Male Union Conical Seal (M-Profile)



## MCP 68



### Features & Benefits

- Durable and secure leak proof joint
- Braze free, permanent joint - no hot works required
- Huge time and resource savings
- 25 Year warranty
- Blue plastic film which will fall off when crimped for easy identification of pressed joint
- 2 point press
- Dust Covers

### Material Specifications

NO	Description	Materials
1	Body	Cu-DHP (CW024A)
2	Crimp indicator film	PVC, Blue
3	O-Ring	EPDM
4	Dust Cap	PE
5	Nut	Brass

### Product Codes and Dimensions

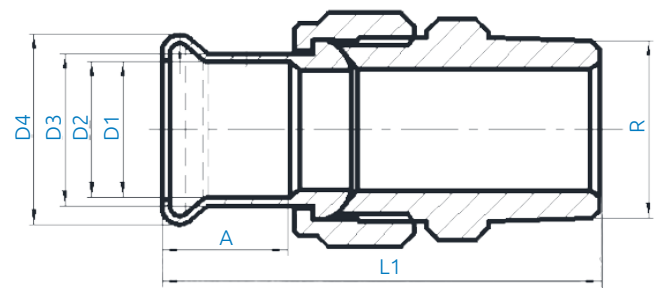
STOCK NO.	D1	D2	D3	D4	A	R	L1
28200	15	15.6	18	23	19	1/2"	58
28203	22	22.8	25	31.3	20	3/4"	64
28206	28	28.8	31	37.4	22	1"	71
28207	35	35.7	38.3	44.7	25	1 1/4"	81
28208	42	42.8	45.3	53.5	29	1 1/2"	85
28209	54	54.8	57.3	65.3	34	2"	98

### Technical Data

- Working Pressure 16 Bar @ 95°C
- "M" profile press jaws or slings
- Approved tools include Novapress, REMS, Rothenberger and Ridgid
- Male thread BSPT

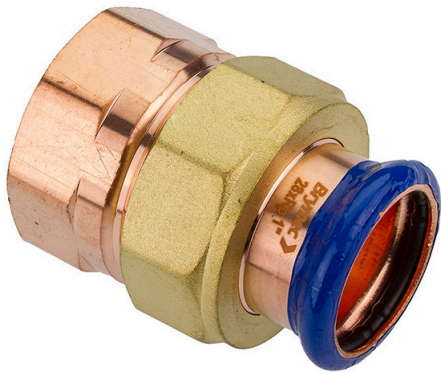
### Applicable Standards

- WRAS approved
- For use with type TX copper tubing conformant to EN 1057
- Manufactured to EN1254 standard



# Copper Press Female Union - Conical Seal (M-Profile)

## MCP 69



### Technical Data

- Working Pressure 16 Bar @ 95°C
- "M" profile press jaws or slings
- Approved tools include Novapress, REMS, Rothenberger and Ridgid
- Male thread BSPT

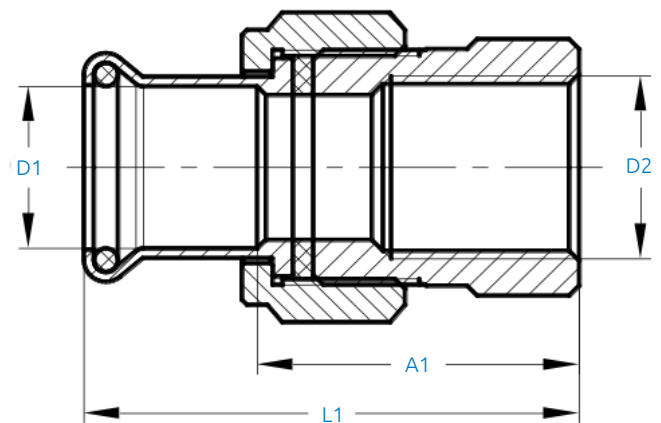
### Applicable Standards

- WRAS approved
- For use with type TX copper tubing conformant to EN 1057
- Manufactured to EN1254 standard



### Features & Benefits

- Durable and secure leak proof joint
- Braze free, permanent joint - no hot works required
- Huge time and resource savings
- 25 Year warranty
- Blue plastic film which will fall off when crimped for easy identification of pressed joint
- 2 point press
- Dust Covers



### Material Specifications

NO	Description	Materials
1	Body	Cu-DHP (CW024A)
2	Crimp indicator film	PVC, Blue
3	O-Ring	EPDM
4	Dust Cap	PE
5	Nut	Brass

### Product Codes and Dimensions

STOCK NO.	D1	D2	L1	A1
28190	15	1/2"	43	26
28192	22	3/4"	49.5	28.5
28195	28	1"	56	33
28196	35	1 1/4"	73.5	47.5
28197	42	1 1/2"	67	37
28198	54	2"	77	42

# Copper Press Crimping Flange (M-Profile)

## MCP 71



### Features & Benefits

- Durable and secure leak proof joint
- Braze free, permanent joint - no hot works required
- Huge time and resource savings
- 25 Year warranty
- Blue plastic film which will fall off when crimped for easy identification of pressed joint
- 2 point press
- Dust Covers

### Material Specifications

NO	Description	Materials
1	Body	Cu-DHP (CW024A)
2	Crimp indicator film	PVC, Blue
3	O-Ring	EPDM
4	Dust Cap	PE
5	Flange	Steel, EN 10305-4 E235
6	Gasket	EPDM
7	Paint	Epoxy, Blue

### Product Codes and Dimensions

STOCK NO.	D1	D2	D3	D4	A	DN	NO. OF BOLT HOLES
28241	42	42.8	45.3	53.5	29	1 ¼"	4
28242	54	54.8	57.3	65.3	34	2"	4
28243	67	69.1	71.7	82.6	48	2 ½"	4
28244	76	78.6	81.1	94.4	49	3"	8
28246	108	110.9	113.8	132.1	65	4"	8

### Technical Data

- Working Pressure 16 Bar @ 95°C
- "M" profile press jaws or slings
- Approved tools include Novapress, REMS, Rothenberger and Ridgid
- PN16 Flange

### Applicable Standards

- WRAS approved
- For use with type TX copper tubing conformant to EN 1057
- Manufactured to EN1254 standard

