

Copper Press Equal Tee (M-Profile) MCP 30



Features & Benefits

- Durable and secure leak proof joint
- Braze free, permanent joint - no hot works required
- Huge time and resource savings
- 25 Year warranty
- Blue plastic film which will fall off when crimped for easy identification of pressed joint
- 2 point press
- Dust Covers

Material Specifications

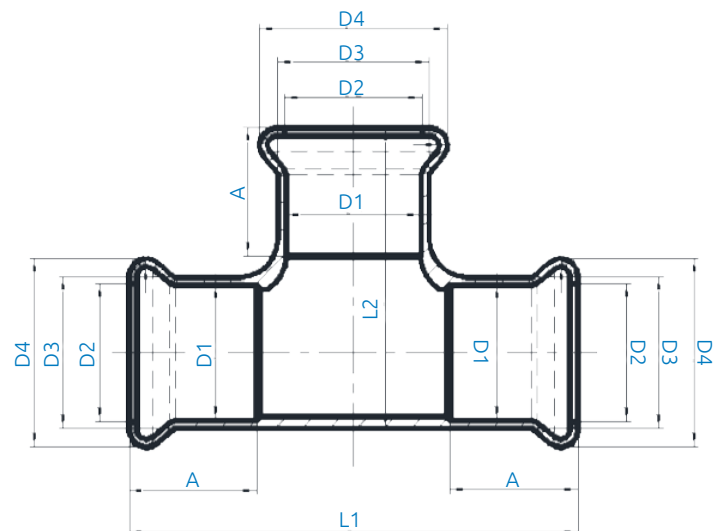
NO	Description	Materials
1	Body	Cu-DHP (CW024A)
2	Crimp indicator film	PVC, Blue
3	O-Ring	EPDM
4	Dust Cap	PE

Technical Data

- Working Pressure 16 Bar @ 95°C
- "M" profile press jaws or slings
- Approved tools include Novapress, REMS, Rothenberger and Ridgid

Applicable Standards

- WRAS approved
- For use with type TX copper tubing conformant to EN 1057
- Manufactured to EN1254 standard



Product Codes and Dimensions

STOCK NO.	D1	D2	D3	D4	A	L1	L2
27850	15	15.6	18	23	19	64	41
27851	22	22.8	25	31.3	20	74	49.5
27852	28	28.8	31	37.4	22	84	57
27853	35	35.7	38.3	44.7	25	100	69
27854	42	42.8	45.3	53.5	29	116	86
27855	54	54.8	57.3	65.3	34	139	98
27856	67	69.1	71.7	82.6	48	189	133
27857	76	78.6	81.1	94.4	49	208	139.5
27859	108	110.9	113.8	132.1	65	273	196