

Copper Press Female Adaptor (M-Profile)

MCP 46



Features & Benefits

- Durable and secure leak proof joint
- Braze free, permanent joint - no hot works required
- Huge time and resource savings
- 25 Year warranty
- Blue plastic film which will fall off when crimped for easy identification of pressed joint
- 2 point press
- Dust Covers

Material Specifications

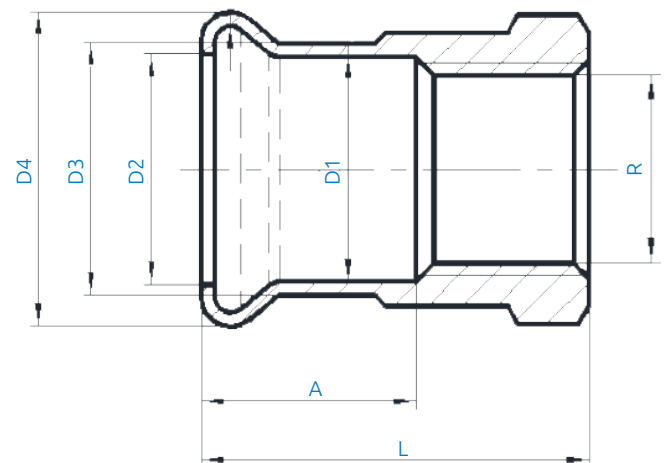
NO	Description	Materials
1	Body	Cu-DHP (CW024A)
2	Crimp indicator film	PVC, Blue
3	O-Ring	EPDM
4	Dust Cap	PE

Technical Data

- Working Pressure 16 Bar @ 95°C
- "M" profile press jaws or slings
- Approved tools include Novapress, REMS, Rothenberger and Ridgid
- Female thread BSPP

Applicable Standards

- WRAS approved
- For use with type TX copper tubing conformant to EN 1057
- Manufactured to EN1254 standard



Product Codes and Dimensions

STOCK NO.	D1	D2	D3	D4	A	L	R
28151	15	15.6	18	23	19	40	1/2"
28153	22	22.8	25	31.3	20	38	1/2"
28154	22	22.8	25	31.3	20	40	3/4"
28157	28	28.8	31	37.4	22	47	1"
28160	35	35.7	38.3	44.7	25	52	1 1/4"
28163	42	42.8	45.3	53.5	29	56	1 1/2"
28165	54	54.8	57.3	65.3	34	65	2"
28166	67	69.1	71.7	82.6	48	97	2 1/2"
28169	76	78.6	81.1	94.4	49	101	3"