

Copper Press Plug In Female Adaptor (M-Profile)

MCP 50



Technical Data

- Working Pressure 16 Bar @ 95°C
- "M" profile press jaws or slings
- Approved tools include Novapress, REMS, Rothenberger and Ridgid

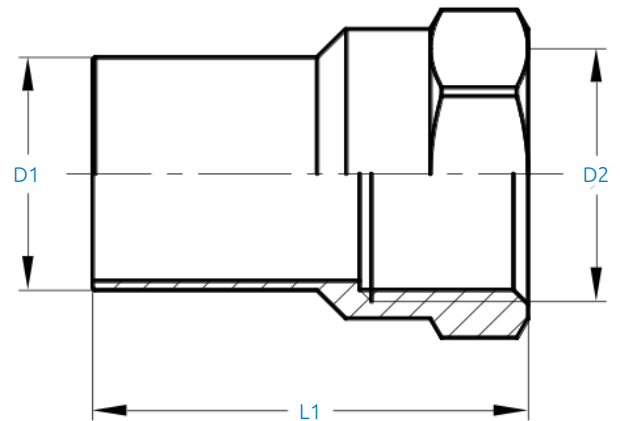
Applicable Standards

- WRAS approved
- For use with type TX copper tubing conformant to EN 1057
- Manufactured to EN1254 standard



Features & Benefits

- Durable and secure leak proof joint
- Braze free, permanent joint - no hot works required
- Huge time and resource savings
- 25 Year warranty
- Blue plastic film which will fall off when crimped for easy identification of pressed joint
- 2 point press
- Dust Covers



Material Specifications

NO	Description	Materials
1	Body	Cu-DHP (CW024A)
2	Crimp indicator film	PVC, Blue
3	O-Ring	EPDM
4	Dust Cap	PE

Product Codes and Dimensions

STOCK NO.	D1	D2	L1
28141	15	1/2"	44
28142	22	1/2"	46
28413	22	3/4"	46.5
28149	35	1"	54
28148	54	2"	71