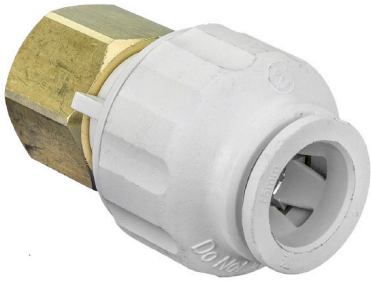


Polybutylene Push-fit Straight Tap Connector PBF 62



Technical Data

- Working Press@ Temp
 - 17 Bar @ 23°C
 - 10 Bar @ 65°C
 - 6 Bar @ 95°C
 - 3 Bar @ 105°C

Applicable Standards

- WRAS approved
- IGC 188-2009
- ASSE1061-2011
- NSF/ANSI- 14,61&372-2015
- Not suitable for hot water re-circulation systems

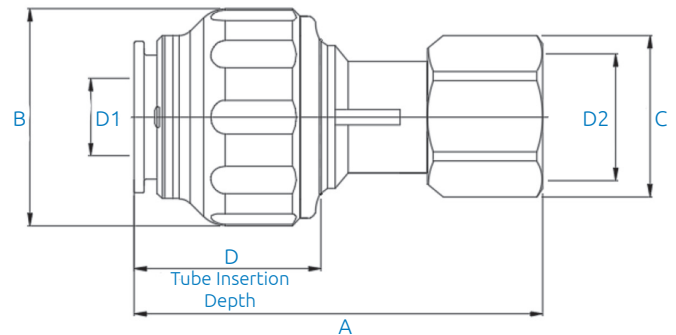


Features & Benefits

- 50 Year warranty
- Labour savings of 40%
- All white plastic system
- Twist and Lock push fittings
- Visible Connection
- Strong Stainless Grip Ring
- Permanent anti-leak system
- No tools required

Material Specifications

NO	Description	Materials
1	Body	Polysulfone, White
2	Cap	Nylon, White
3	Collet	Celcon, White
4	Snap Ring	Acetal, White
5	O-Ring	EPDM, Black
6	Insert Ring	Acetal, Blue
7	Body Ring	Acetal, Blue
8	Nut	Brass



Product Codes and Dimensions

STOCK NO.	D1	D2 (BSPP)	A (mm)	B (mm)	C (mm)	D (mm)
36066	15	1/2"	55	32	28	30
36067	22	3/4"	78	39	31	37
36068	15	3/4"	59	32	31	30